



Guise Public School

"Educating and caring for the whole child"

Eucalyptus Drive, Macquarie Fields

Telephone: (02) 9605 4397

Fax: (02) 9829 3975

Web Address: <https://guise-p.schools.nsw.gov.au/>

Email: guise-p.school@det.nsw.edu.au

Term 4 Week 6 2020

School Term Dates 2020

Term 4 Monday 12 October - Friday 18 December (Students finish Wednesday 16 December)

SCHOOL CALENDAR

Thursday 19 November

Friday 20 November

Friday 27 November

Tuesday 1 December

Tuesday 8 December

Wednesday 9 December

Thursday 10 December

Friday 11 December

Monday 14 December

Guise Film Festival

P&C Mufti Day

Jump Rope

Year 7 Orientation Day

Presentation Day

Gold/Sapphire Reward Day

Talent Quest

Sports/Arts Presentation Day

Year 6 Farewell



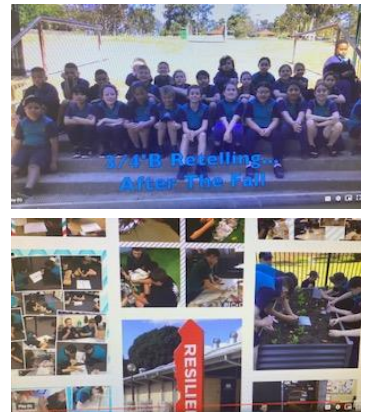
Please report trespassing on school grounds, unlawful acts and vandalism to School Security on 1300 880 021

Principal's Report

Films by Guise Showcase

During Term 3 and 4 all teachers and classes have had the opportunity to work with Mr Sapsed, our technology mentor, to use various apps and create an iMovie and also showcase their learning in different Key Learning Areas. Each class was focused on creating their own unique film linked to our school YCDI Keys to Success and these were shown at the Guise Film Festival showcase today. During the day, each class has had the opportunity to watch the films created by other classes, with students as the stars of the show.

We hope those families who purchased a DVD or USB of the films enjoy the Guise Film Festival and watching your children's movie and other classes on screen.



Classes Next Year

To help with the organisation of class formations and planning for next year, could you please notify the school office as soon as possible, if you know your child/children will not be attending Guise Public School in 2021. We would really like to start the year with students in their 2021 classes. In order to do this it is important that we know if any students are leaving or enrolling in our school.

Uniforms

As the end of year approaches and with the expectation that all students come each day in full school uniform, I ask all parents/carers to take stock and check that they have enough items to start the new 2021 school year. Uniform items are available to purchase from LLT Fashion located in Glenquarie Town Centre, Macquarie Fields. The following items, however, are only available for purchase from the school office: - short sleeve polo, long sleeve polo, school cap, bucket hat and wide-brimmed hat. Payment can be made by cash, EFTPOS or online payment on our school website.

Part of the school uniform is the wearing of black school shoes and we would like all students to start next year in black shoes. All students need to wear a Guise PS School Hat in the playground. When buying socks the colour is white for girls and navy blue for boys.



What works best: Document overview for parents

Our school is committed to ensuring that *how* we teach your child is based on what we *know* makes the biggest difference to their learning. In our school, we have a focus on using the 'What works best' eight practices for effective teaching.

These practices include:

- Having high expectations of your child.
- Using explicit teaching in the classroom.
- Giving effective feedback to your child on their learning.
- Using data to inform how we teach your child.
- Using regular and effective assessments so we know how your child's learning is going.
- Supporting the wellbeing of your child by looking out for their mental, physical and emotional health.

- Managing the classrooms well so they are safe, positive and stimulating environments for learning.
- Making sure our teachers collaborate with each other, and experts outside the school, so teaching practice continuously improves.

In addition, research shows that greater levels of support and engagement from parents and carers are associated with better student academic and wellbeing outcomes. We also know that students learn more effectively when the home and school environments form complementary and supportive roles for learning. It is for this reason that we are focused on continuing to foster the partnership between our school and parents.

The Department of Education has now released a 'What works best' resource for parents and carers, which provides tips for having conversations with your child about their learning. You can visit the department's Parent Hub where you'll find other tailored resources for parents and carers, as well as a message from the NSW Minister for Education the Hon. Sarah Mitchell MLC <https://education.nsw.gov.au/parents-and-carers/learning/what-works-best-2020-update>

Leave

I will be taking a short period of long service leave from Wednesday 25 November and will return to work on Monday 7 December 2020. During this time, Mrs Heyburgh will be relieving as the school principal.

Have a wonderful fortnight!
Megan Predl



What works best: 2020 update

Overview for parents and carers of primary and secondary school students



NSW public schools are committed to ensuring that how we teach your child is based on what we know makes the biggest difference to their learning.

In March this year, the NSW Department of Education released an update of some of the most significant research into effective teaching. This report is called 'What works best: 2020 update' and outlines eight evidence-based practices that teachers can use in their classrooms to support improved student learning. It is likely that the 'What works best: 2020 update' will inform the teaching and learning in your child's school.

Below is a summary of the eight 'What works best' practices for effective teaching, including some conversation tips to help you support these practices at home. We suggest that you use just one set of questions at a time with your child.

You can find the 'What works best: 2020 update' publication, together with other evidence-based resources for schools, at education.nsw.gov.au/about-us/educational-data/what-works-best-2020-update

1. High expectations

Students learn best when teachers have high expectations. Having high expectations means that teachers work hard to gain students' interest, encourage them to learn new things, provide help when they need it, are clear and consistent about how they want students to behave and learn, and vary the way they teach to meet students' needs.

Check in with your child

- For primary school students: Did you try something new today? What was it? How did you go? How do you feel when you're learning something new?
- For secondary school students: When you are asked to do something in class, how do you know what standard of work the teacher expects?

2. Explicit teaching

Students learn best when teaching is explicit, especially when learning something new. Explicit teaching involves teachers clearly explaining to students why they are learning something, how it connects to what they already know, what they expect students to do, how to do it and what it looks like when they have succeeded.

Check in with your child

- For primary and secondary school students: Tell me about something you learnt today. Did you find it easy to learn, or did you need to ask a few questions? How could you tell when you 'got it'?

3. Effective feedback

Students learn best when teachers provide them with effective feedback. Feedback that is effective is constructive, detailed and specific. It focuses on how students performed on a particular task, and is clear about where mistakes were made and what needs to happen to improve in future.

Check in with your child

- For primary and secondary school students: When you're learning something new, how do you know if you're on the right track? How do you know what you can do to improve next time?





4. Use of data to inform practice

Students learn best when teachers use data to confirm where students are up to in their learning and to plan what to teach next. Data is any form of information that helps teachers to do this. Data can come from a range of places, including class quizzes, student answers to teacher questions, samples of students' work and formal exams.

5. Assessment

Students learn best when teachers use high quality assessment. Assessment refers to the range of activities that teachers use to evaluate where students are up to in their learning. It includes formal activities such as exams and surveys, as well as more informal activities such as asking students questions and evaluating samples of their work.

Check in with your child

- For primary school students: How do you show your teacher what you know and what you can do?
- For secondary school students: Your teacher needs to understand where you are up to in your learning, so that they know what to teach next. How do you show your teacher what you know and what you can do?

6. Classroom management

Students learn best when teachers manage their classrooms well. Classroom management includes the broad range of things that teachers do to encourage a safe, positive and stimulating learning environment for their students.

Check in with your child

- For primary school students: Are there rules or expectations you need to follow in your classroom? Can you tell me a few? What happens when you work hard to follow them? What happens if you don't follow them?
- For secondary school students: Does your school have school or classroom rules or expectations? Can you name a few? What happens when students follow them? What happens if students don't follow them?

7. Wellbeing

Students learn best when they have a high level of wellbeing. Student wellbeing is a broad term that includes good mental, physical and emotional health, feeling supported in learning, building healthy relationships and having a strong sense of meaning and purpose. Teachers can support students' wellbeing by:

- creating a safe environment
- helping students to feel that they belong
- valuing their opinions and perspectives
- encouraging them to be interested in learning
- helping them to manage their emotions
- helping them to develop positive relationships with teachers and other students.

Check in with your child

- For primary and secondary school students: How do you feel about school at the moment? Are there things that you find hard or challenging? Do you know what to do or who you can speak to if you're having a bad day or have a problem? Does someone look out for you at school?





8. Collaboration

Students learn best when teachers collaborate. Collaboration involves teachers working together with other teachers and experts from outside the school to improve their teaching. Effective collaboration is likely to include teachers planning lessons and teaching programs together, observing each other's lessons and giving feedback, and discussing and thinking about issues related to their work.

For example ...

High expectations at Aldavilla Public School

Aldavilla Public School attributes much of its success in improving outcomes for students to a focus on high expectations. The students are constantly reminded that they can be whatever they want to be. One way that high expectations are encouraged at Aldavilla Public School is through setting goals. Students are expected to be working towards learning goals that are achievable, and staff are constantly encouraging students to push themselves to reach their next goal.

The school also encourages high expectations by taking a whole-school approach. For example, every class follows exactly the same behaviour management system. Student-teacher relationships are also a priority. All teachers make an effort to get to know students and show that they care about them. This can be achieved by doing things as simple as asking what students did on the weekend, or knowing who a student's brothers and sisters are.

For example ...

Use of data to inform practice at Concord High School

The mathematics faculty at Concord High School studies their HSC data each year and uses the results to plan their teaching programs in Years 7-11. The head teacher of mathematics explains: "We have a really good look at the questions students got wrong and we try to re-program based on things that the kids have got wrong. For example, our students were struggling with 'significant figures' in the HSC so we've now brought significant figures into Year 7. That means they have six years where they can see that they can round to significant figures, and now it hasn't been an issue."

Sometimes the re-programming involves changing the order of topics during the year so that students have more opportunities to apply their knowledge and understanding of these concepts throughout the year. The head teacher of mathematics continues: "Our students were doing really badly with probability. We had a look at our programs and probability was something we were doing at the end of every year, so we've moved it around a little bit so they are seeing it earlier in some years."





Guise Public School

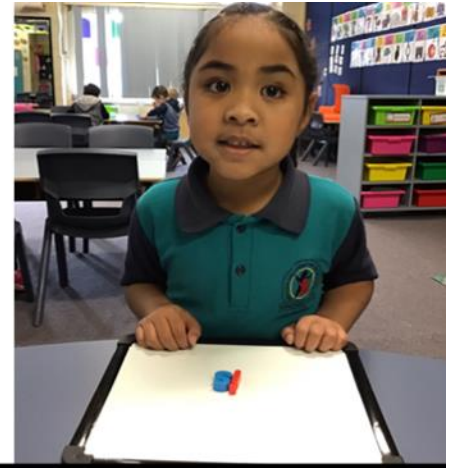
"Educating and caring for the whole child"

Eucalyptus Drive, Macquarie Fields Telephone: (02) 9605 4397 Fax: (02) 9829 3975

Web Address: <https://guise-p.schools.nsw.gov.au/> Email: guise-p.school@det.nsw.edu.au

School Planner Term 4 2020

Term Four	MONDAY	TUESDAY	WEDNESDAY	THURSDAY	FRIDAY	SAT/SUN
Week 1	12 October First day back for staff and students	13 October	14 October Links to Learning	15 October	16 October	17 18 Oct
2	19 October Book Week	20 October Book Week Character Dress Up Day	21 October Links to Learning	22 October	23 October	24 25 Oct
3	26 October	27 October Assembly	28 October Links to Learning Year 5 Leadership Day	29 October NSW Health Dental Screenings	30 October NSW Health Dental Screenings	31 Oct 1 Nov
4	2 November	3 November	4 November Links to Learning	5 November	6 November	7 8 Nov
5	9 November	10 November	11 November Links to Learning Remembrance Day	12 November	13 November	14 15 Nov
6	16 November	17 November Assembly	18 November Links to Learning	19 November Guise Film Festival	20 November P&C Mufti Day	21 22 Nov
7	23 November	24 November	25 November Links to Learning	26 November	27 November Jump Rope	28 29 Nov
8	30 November	1 December Year 7 Orientation Day	2 December Links to Learning	3 December	4 December	5 6 Dec
9	7 December	8 December Presentation Day	9 December Gold/Sapphire Reward Day	10 December Talent Quest	11 December Sports/Arts Presentation Day	12 13 Dec
10	14 December Year 6 Farewell	15 December STEM Alive Day	16 December Last Day for students	17 December Staff Development Day	18 December	19 20 Dec



IS YOUR CHILD STARTING SCHOOL IN 2021?



To assist with school readiness, Guise Public School is offering a free Pre-Kindergarten program on Tuesday and Thursday mornings 9am-12pm. For further information or to book in, please contact the office on 9605 4397.

Stay informed with the SkoolBag App



The SkoolBag app is the easiest way to stay up-to-date with school events, last minutes notices, newsletters and **all** school communications.

1

Download the app

Search for the free SkoolBag app in the Apple App or Google Play Store

2

Create an account

Sign up in seconds with your email address

3

Add your school

Search for your school and add your subscription groups

